



## **Windows 2000 Software Installation Instructions GCC Elite 12ppm Series Printers**

This document is intended to provide instructions for downloading and installing the Windows 2000 driver software for GCC's Elite 12ppm Series of laser printers. Please follow all instructions in this document in order to assure that the software is properly installed and configured onto your Windows 2000 PC. Please contact GCC Technical Support directly at (781)276-8620 or on-line at [www.gcctech.com](http://www.gcctech.com) for assistance with this installation.

### **Software Download**

Start by downloading the Elite 12 Series Windows 2000 software from GCC's web site at the following address:

<ftp://ftp.gcctech.com/pub/postscript-pcl/elite-12ppm/windows/Elite12Win2K.exe>

This will give you a file called "Elite12Win2K.exe". This file is a self-extracting archive. Double-click the file's icon in Windows to extract the software. When prompted for a location to extract the files to, type in:

C:\GCC

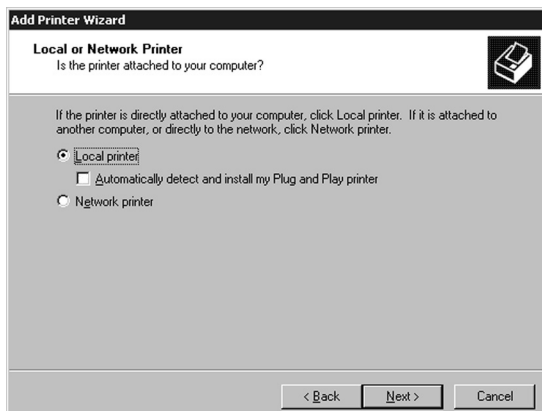
This will place the driver files in a folder on your hard drive called "GCC". Once this is done, proceed to the software installation instructions starting on the next page.

# Windows 2000 Software Installation

**USB Installation Note:** If connecting the printer via USB for the first time, make sure both the PC and printer are powered on. Connect the USB cable to the USB port on the PC, then to the USB port on the printer. Plug and Play will install necessary USB printing software within Windows 2000 and allow the printer to be added properly following the steps outlined in this document.



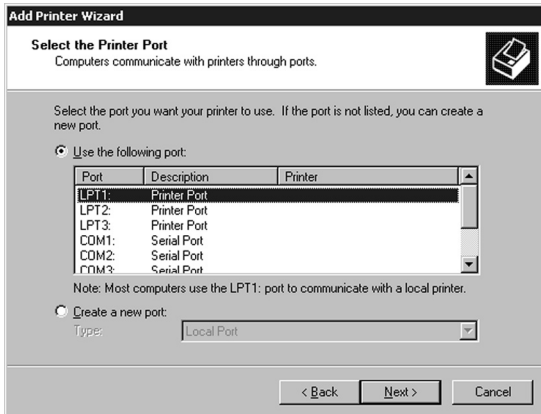
1. Go to the Start menu of Windows 2000, then up to Settings and select Printers. In the Printers window, double-click the Add Printer icon to start the Add Printer Wizard. Click "Next" at the Add Printer Wizard welcome screen.



2. The next window of the Add Printer Wizard will ask if the printer is connected to the local computer or to a Network Printer Server. De-select the box next to "Automatically detect and install my Plug and Play Printer," as this feature is not supported with the Elite 12 series.

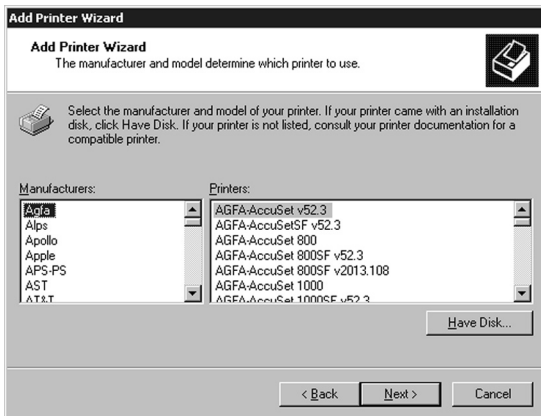
Select "Local Printer" unless the printer that you are selecting is attached to another PC or accessed via an NT or 2000 server. Click Next.

**Note:** If setting up the printer as a stand-alone ethernet network device, select "Local Printer" at this point and install the driver as if the printer were connected to the parallel (LPT1:) port of the PC. After the installation, refer to the Windows 2000 Networking section of this document, starting on page 7.

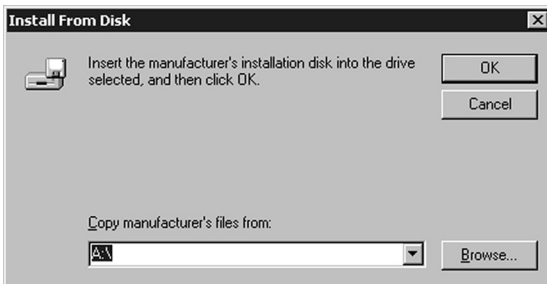


3. A list of ports will appear. Select the appropriate local parallel, serial or USB port for the printer and click Next.

If setting up a networked printer over Ethernet, select a LPT (Parallel) printer at this point, then consult the steps on Page 7 of this document to configure the printer as a network device.



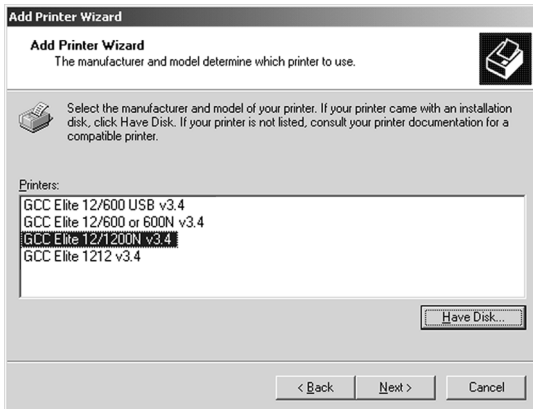
4. A list of manufacturers and printer models will appear. Click Have Disk.



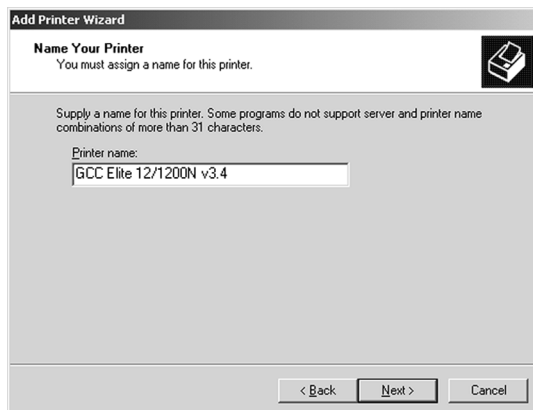
5. This will bring up the "Install From Disk" window. Use the Browse button to select the "GCC" folder on your "C:" drive and click Open. Select the GCCE12.INF file within this folder and click on Open. Click on OK.

If you prefer, you can also type the directory path into the "copy files from" field at the bottom of the window. To do this, type:

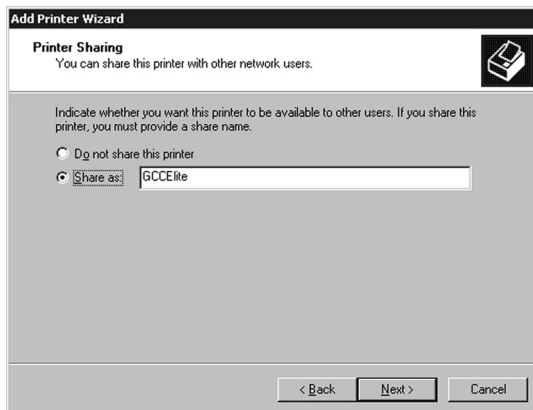
C:\GCC



6. A list of GCC Elite 12ppm printer models will appear. Select your printer model from the list and click Next.

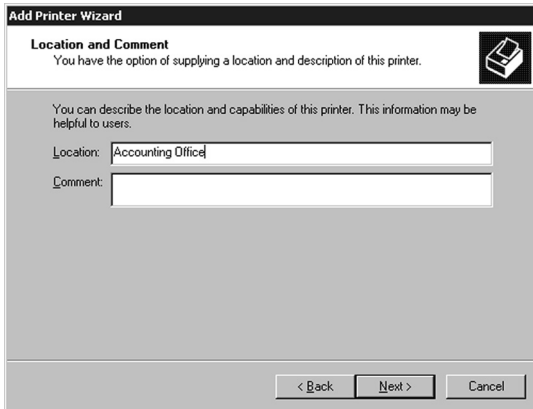


7. The next window will ask for a printer name. You can type in a new name, or keep the default name. Click Next.



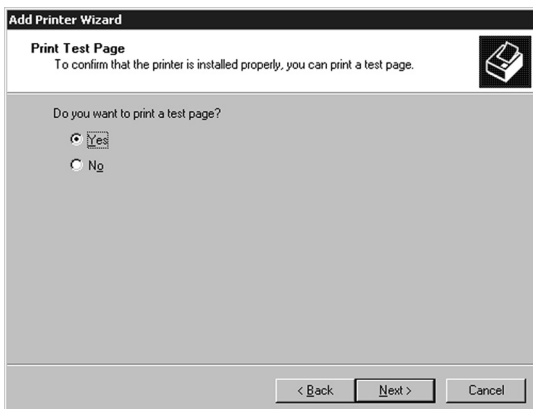
8. The printer sharing window will appear. Select if the printer is to be shared (other PCs will access it via this workstation or server) or Not Shared. If selecting "Do not share this printer," click Next and skip to Step 10.

If selecting Shared, type in a Share Name for the printer. This will allow users to identify the printer over the Windows network. Click Next.



9. The next window allows you to specify the location of the printer. This will allow users to more easily identify the printer on a large network. You can also enter comments to specify the printer's capabilities, etc. to users

Enter information into these fields if desired, then click Next.

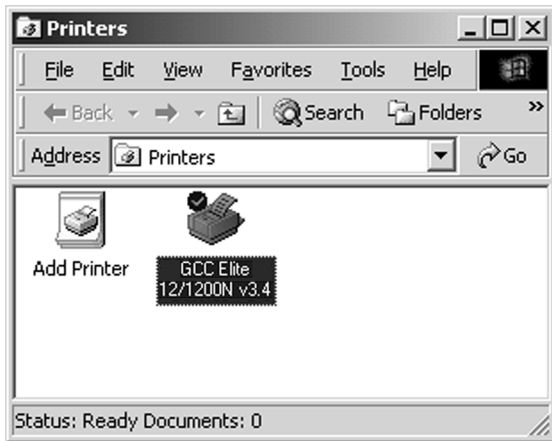


10. A window will appear asking if you wish to print a test page. Click Yes if you are installing a local printer. Click No if you are installing the driver and will be setting up the printer as a network device later. Click Next.



11. A final window will appear showing a summary of the installation. Check over all the information listed. If anything is incorrect, click Back to go back and change it. Otherwise, click Finish.

A window may appear informing you that a Digital Signature cannot be found for the printer and asking if you wish to continue. Click Yes to continue and complete the installation.



12. When the installation is complete, you will be returned to the Printers window and a new icon for the printer will appear.

If installing a local printer, you are now ready to print to the Elite 12 printer. If installing as a stand-alone ethernet network device, proceed to the next section of this document, "Windows 2000 Network Configuration."

# Windows 2000 Network Configuration

## Setting Up LPR Printing

If the printer driver has not already been installed, please install it before continuing. Instructions for installing the printer are found on pages 1-6 of this document. Install the printer as if it were a local printer connected to the parallel (LPT1) port. The following instructions will cover setting up the Windows 2000 server to direct output to the printer as an LPR device. Please note: In the following instructions, some field or dialog names may vary depending on the Win2000 release pack in use.

- Click on the Start Button. Select Settings and then Printers.
- Locate the icon for the Elite 12 printer that you have installed. Right-click on the printer icon and select Properties.
- Click on the Ports tab and click on Add Port.
- Select "Standard TCP/IP Port" from the list of options, then click "New Port."
- This will open the Add TCP/IP Port Wizard. Click Next at the introduction page of the Wizard.
- The next window asks for a Printer Name/IP Address and Port Name. Type in the IP Address that you entered into the printer. If the printer does not have an IP address, please follow the instructions in the Elite 12ppm User's Manual to assign one. The Port Name will be filled in automatically, but can be changed if desired. Click Next.
- The next dialog window will ask for a Device Type. Click on the Standard radio button and select "Generic Network Card" from the list. Click Next.
- A summary page will appear showing all the settings that were made within the Add TCP/IP Port Wizard. Double-check these settings and click Finish.
- The Printer Ports window will re-appear, click Close. Under the Ports tab, the newly created TCP/IP port will be displayed and selected (listed by its Port Name as entered in the TCP/IP Port Wizard).
- Make sure the new port is highlighted, then click on "Configure Port."
- Under "Protocol," click on the "RAW" radio button and set port to 3300.
- Under "Queue Name," fill in a name for the print queue.
- Click OK and Apply to accept the changes to the port.

This will allow the Windows 2000 server to print to the Elite 12ppm using LPR.

## **Selecting a Shared Printer**

This section briefly describes the steps for setting up client access to a shared printer. This will allow other PCs on the network to print to the printer over the Windows 2000 server.

Windows 95/98:

In the Printer Properties on the Details tab. Click the Add Port button and browse the network for the shared printer. Look for the Share Name that was selected when setting up the printer on the Win2000 server.

Windows 2000/NT 4.0:

Add a new printer (with Add Printer), select "Network Printer Server" rather than My Computer and choose the shared printer from the shared printers list. Look for the Share Name that was selected when setting up the printer on the Win2000 server.