



Windows 98 USB Software Installation Instructions GCC Elite 12ppm Series Printers

This document is intended to provide instructions for downloading and installing the Windows 98 USB driver software for GCC's Elite 12ppm Series of laser printers. Please follow all instructions in this document in order to assure that the software is properly installed and configured onto your Windows 98 PC. Please contact GCC Technical Support directly at (781)276-8620 or on-line at www.gccprinters.com/support for assistance with this installation.

Part One - Download Software

Start by downloading the GCC USB software from GCC's web site at the following address:

<ftp://ftp.gccprinters.com/pub/postscript-pcl/elite-12ppm/windows/Elite12USB.exe>

This will give you a file called "Elite12USB.exe". This file is a self-extracting archive. Double-click the file's icon in Windows to extract the software. When prompted for a location to extract the files to, type in:

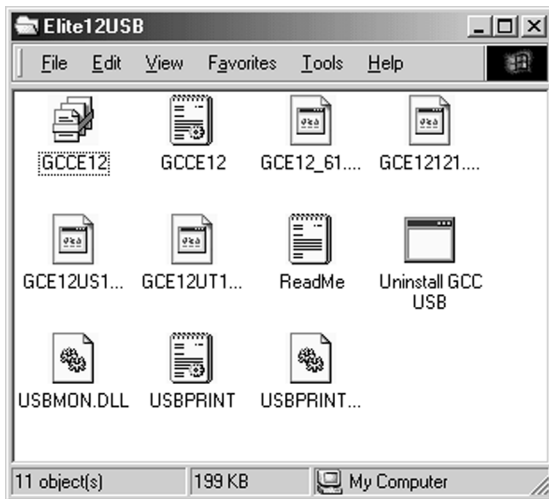
`C:\windows\desktop`

This will place the driver files in a folder on your desktop called "Elite12USB". Once this is done, proceed to the installation instructions starting on the next page.

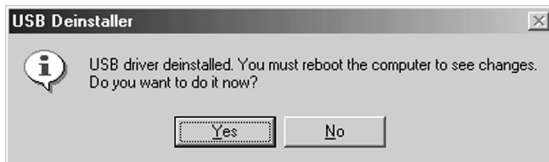
Part Two - Uninstall Previous GCC USB Software

If you have previously installed GCC's USB software on your PC from an older software download or disk, you will need to uninstall this software in order for this newer software version to be used. To uninstall the older software, follow these steps:

1. Delete any current printers set up to print via USB on the PC. To do this, click the Start button, then go to Settings and Printers. Highlight the icon(s) for any GCC printer(s) connected over USB and press Delete. If prompted to remove files associated with the printer, click Yes.



2. Open the folder called "Elite21USB" that was created on your desktop. Locate the icon named "Uninstall GCC USB." Double-click this icon to run the Uninstall utility.



3. A dialog box will appear informing you that the previous USB driver has been deinstalled. This window will also inform you that the PC will require a re-boot. Click Yes to restart the PC.

Part Three - Install USB Software

The new USB software is installed through the Windows Plug and Play process. When the printer is plugged into the PC, the PC should automatically begin a two-step Plug and Play installation. The first step is to install the USB printing software, and the second step is to install specific software for your GCC printer model. The steps for these installations are as follows:

1. Make sure that the PC and printer are both turned on and running, and that the printer's LCD display is reading "Ready."
2. Connect the USB cable first to the printer's USB port, then to an available USB port on the PC.
3. The Add New Hardware Wizard should start up, informing you that a new device has been found. Click Next.





4. The next window will ask what you want Windows to do. Choose “Search for the best driver for your device” and click Next.



5. The system will then ask where to look for new drivers. Check off “Specify a Location.” Use the Browse button to select the Elite12USB folder on the desktop. Select the USBPRINT.INF item in this folder. Click OK. Click Next.



6. The next window will inform you that a driver has been found for USB Printing Support. Click Next to install the USB driver.

Once this driver is installed, the PC should automatically sense the printer and start the second Plug and Play installation, for the specific printer software. This process is covered in Part Four of these instructions.

Part Four - Install Printer Software



1. The Add New Hardware Wizard will start once again, this time to install software specific to your GCC printer. Click Next to continue.



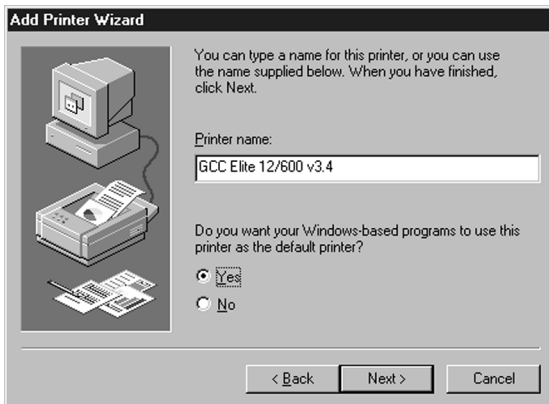
2. The next window will ask what you want Windows to do. Choose "Search for the best driver for your device" and click Next.



3. The system will then ask where to look for new drivers. Check off "Specify a Location." Use the Browse button to select the Elite12USB folder on the desktop. Select the GCCE12.INF item in this folder. Click OK. Click Next.



4. The next window will inform you that a driver has been found for your GCC printer model. Click Next to install the driver.

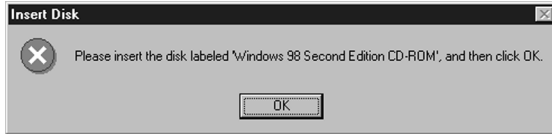


5. The next window will ask for a name for the printer. You can type in a new name, or keep the default name. Click Next.

If more than one printer is installed on this computer, this window will also ask if you wish to make this printer the default printer for your Windows applications. Click Yes or No. Click Next.



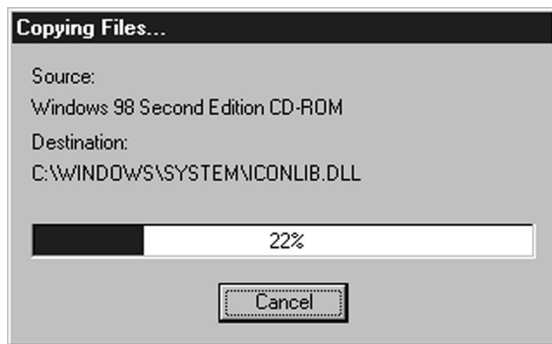
6. A window will appear asking if you wish to print a test page. Click Yes. Click Finish.



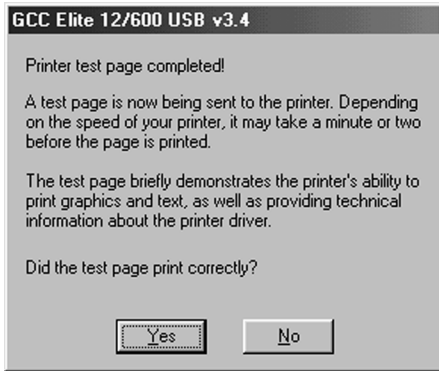
7. A dialog box may appear asking you to insert the Windows 98 CD. Insert the CD and click OK.



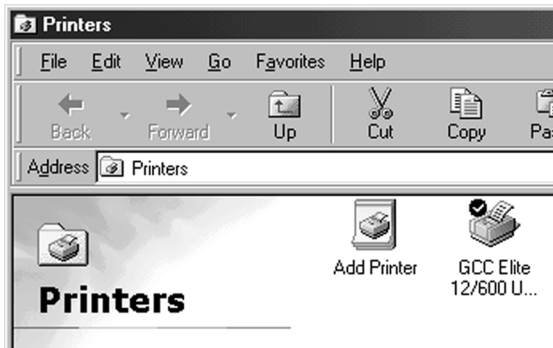
8. A dialog box may appear telling you that necessary files on the CD cannot be found. Make sure the Windows CD is inserted, then use the Browse button to access the Windows CD. Select the folder called 'WIN98' on the Windows 98 CD. Click OK.



8. A status window will appear, showing the progress of the installation.



9. When finished, the test page will be generated (if you chose to print a test page in Step 8). If the page prints, click Yes in this window. If not, click No and follow the Windows troubleshooting steps that appear.



13. When the installation is complete, you will be returned to the Printers window and a new icon for the printer will appear.

This completes the Windows 98 USB installation process for the Elite 12ppm printer.