



Windows XP Software Installation Instructions GCC Elite Series Printers

This document is intended to provide instructions for obtaining and installing the Windows XP driver software for GCC's Elite series of laser printers. Please follow all instructions in this document in order to assure that the software is properly installed and configured onto your Windows XP PC. Please contact GCC Technical Support at (781)276-8620 or on-line at www.gccprinters.com if you encounter problems with this installation. Fee's may apply.

Obtaining Software

In order to install your GCC printer with Windows XP, you will need to obtain the Windows 2000 driver software for your printer model. The printing software used by Windows XP is identical to that used by Windows 2000.

If you have a newer GCC software CD, Windows 2000 driver software may be included on the CD-ROM. Check the CD for a folder called "Win2000." If your CD does not include Windows 2000 software, you can download drivers from GCC's web site at the following address:

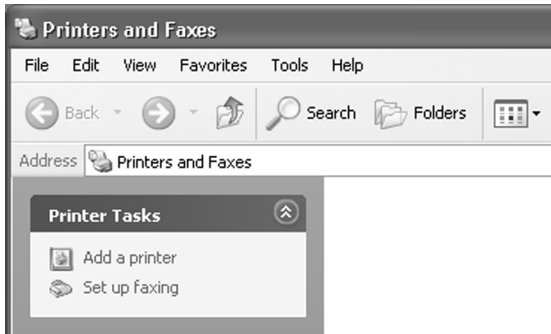
<http://www.gccprinters.com/support/swol.html>

Click on your printer model from the list and click on the link for Windows 2000 drivers for that model. These files are saved as self-extracting archives. Double-click the file's icon in Windows to extract the software. When prompted for a location to extract the files to, type in:

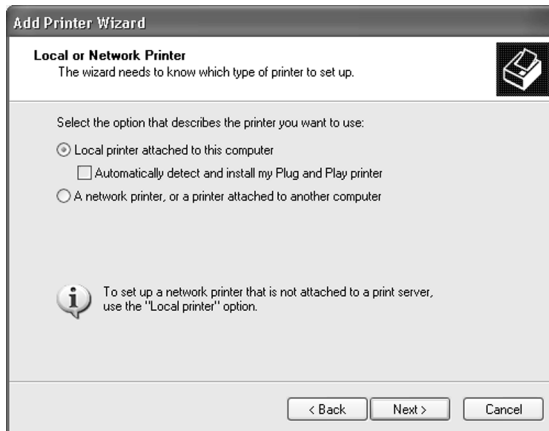
C:\GCC

This will place the driver files in a folder on your hard drive called "GCC". Once this is done, proceed to the software installation instructions starting on the next page.

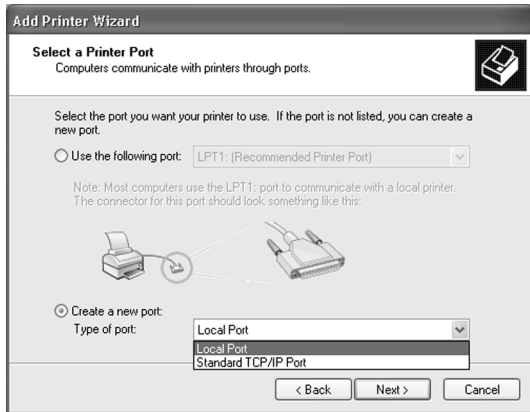
Windows XP Software Installation



1. Go to the Start menu of Windows XP, then select "Printers and Faxes." This will open the Printers and Faxes window. In the Printer Tasks menu, click the "Add a printer" icon to start the Add Printer Wizard. Click "Next" at the Add Printer Wizard welcome screen.



2. The next window of the Add Printer Wizard will ask if the printer is connected to the local computer or to a Network Printer Server. Select "Local Printer" unless the printer that you are selecting is attached to another workstation or accessed via a dedicated print server. De-select the box next to "Automatically detect and install my Plug and Play Printer." Click Next.

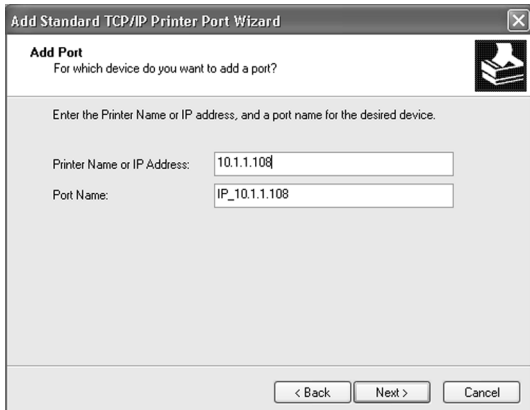


3. This window asks for a printer port to be selected. If the printer is attached to a local port on the PC, select “Use the following port” and select the appropriate Parallel (LPR), Serial (COM) or USB port from the pull-down menu. Click Next. Skip to [Step 9](#).

In order to access the printer over Ethernet using TCP/IP, a new TCP/IP port must be created. Click the radio button next to “Create a new port,” and select “Standard TCP/IP Port” from the pull-down menu. Click Next.



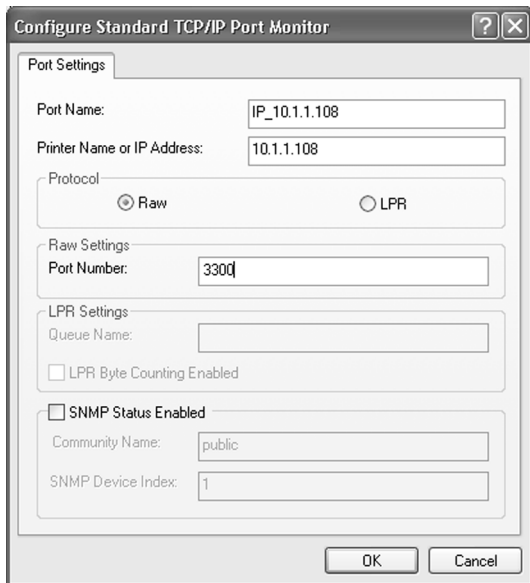
4. This will open the Windows TCP/IP Printer Port Wizard. Make sure the PC and printer are both properly connected to the Ethernet network and that the printer is powered on. Also, make sure your printer has been assigned an IP address according to the instructions in your printer’s documentation. Click Next.



5. This window asks for the Printer Name or IP Address for the printer. Fill in the printer’s IP address in this field. A Port Name can also be assigned in this window, in order to more easily identify the port when the time comes to select the printer. A new name can be assigned, or the system will automatically fill in a default name. Click Next.



6. The next window will ask for additional port information. Under "Device Type," click on the "Custom" radio box and click "Settings..."



7. This will bring up the Port Settings window. The printer can be used under either the Raw or LPR protocol. Consult your network administrator for the preferred connection protocol on your network.

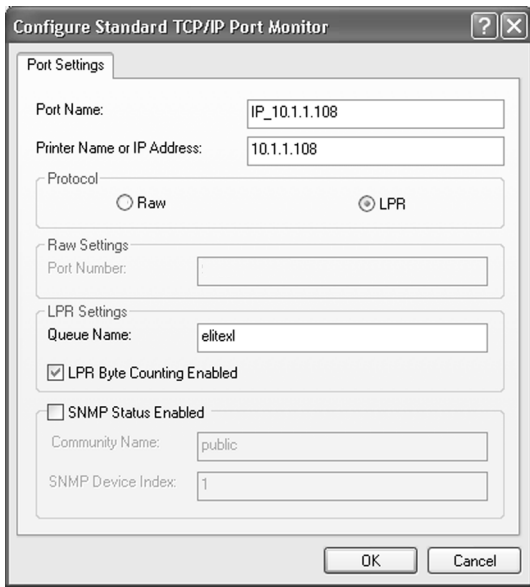
If using Raw: Under "Protocol," select the radio button next to "Raw."

Under "Raw Settings," set the Port Number as follows:

For all GCC printers *except* the Elite 21 Series, enter "3300" as the Port Number.

For the Elite 21 Series, enter "10001" as the Port Number.

Do not make any other entries or changes in this window. Click OK to return to the Additional Port Information window, then click Next to proceed.



7a. **If using LPR:** Under “Protocol,” select the radio button next to “LPR.”

Under “Raw Settings,” set the Port Number as follows:

For GCC large format (Elite XL) printers, enter “Elitexl” as the Queue Name.

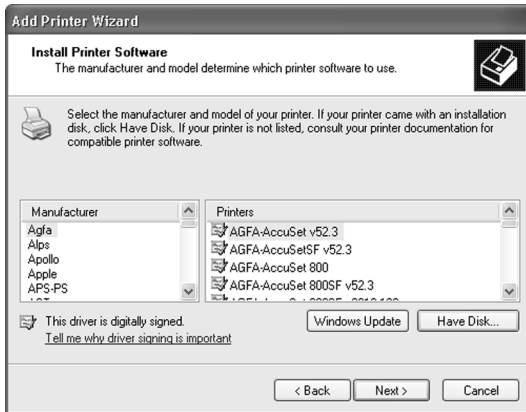
For GCC smaller format (Elite) printers, enter “Elite” as the Queue Name.

Click on the checkbox next to “LPR Byte Counting Enabled.” to enable byte counting.

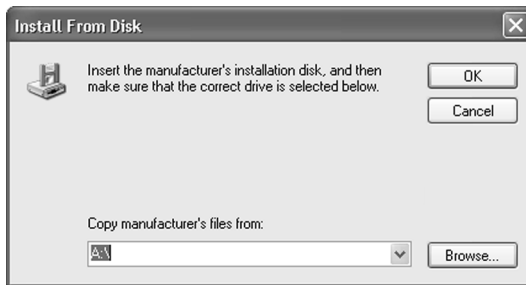
Do not make any other entries or changes in this window. Click OK to return to the Additional Port Information window, then click Next to proceed.



8. This will complete the TCP/IP Printer Port Wizard. A window will appear summarizing the settings that have been made for the new port. Click Finish.



- The Add Printer Wizard will continue. A list of manufacturers and printer models will appear. Click Have Disk.



- This will bring up the "Install From Disk" window. Use the Browse button to select the location of the GCC *Windows 2000 software* for your printer (Windows XP uses identical software driver files to Windows 2000).

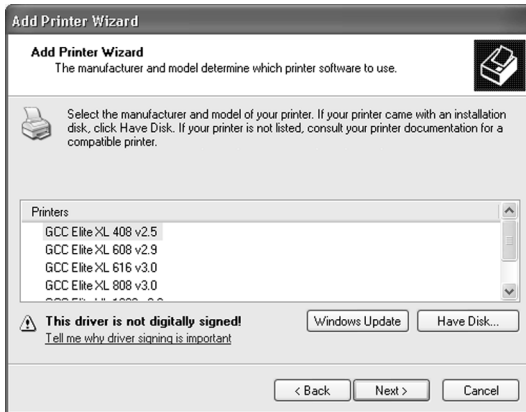
If installing from a GCC CD: Go to the "Win2000" folder on the CD.

If installing from a download: Go to the "GCC" folder on your hard disk where the downloaded software was extracted to.

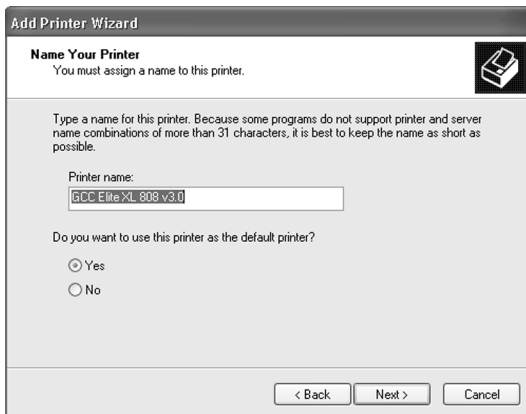


- When you locate the folder containing the Windows 2000 driver software for your printer, highlight the "GCxxx.inf" file ("xxx" will vary depending on your printer model) and click Open

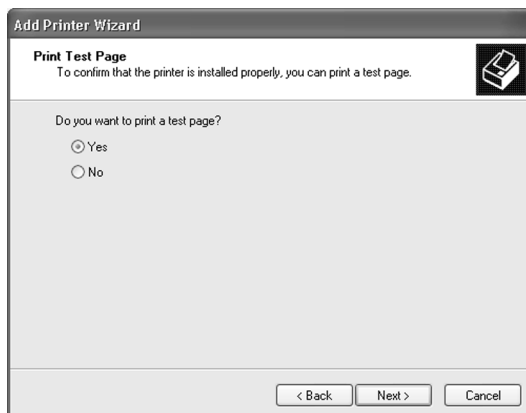
You will be returned to the Install from Disk window. Click OK to proceed.



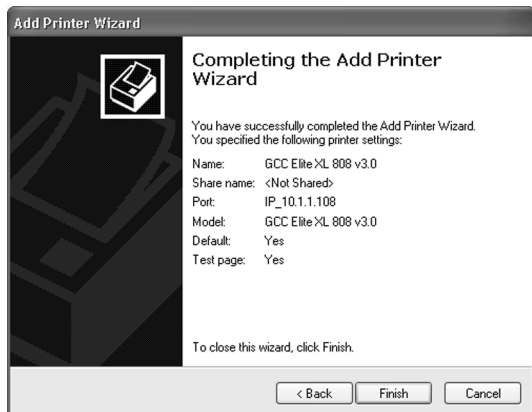
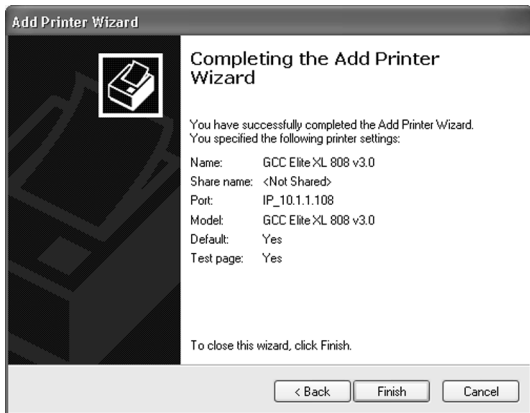
11. A list of GCC printer models will appear. Select the model of your printer from the list, then click Next.



12. The next window will ask for a printer name. You can type in a new name, or keep the default name. Click Next.



13. A window will appear asking if you wish to print a test page. Select Yes or No. Click Next.



14. A summary will appear of the various settings selected within the previous windows. If all settings look correct, click Finish to complete the installation. A progress bar will appear, showing the progress of the installation.

15. An error message may appear informing you that the software has not passed Windows Logo testing and advising to stop the installation. Despite the strong wording within this dialog box, there are no potential compatibility or system problems that can be caused by continuing the printer installation. Click "Continue Anyway" to proceed.

16. The summary window will appear again when finished. A window may also appear informing you that the test page has been sent to the printer, if you selected "Yes" in Step 13.

Click Finish to leave the Add Printer Wizard.



17. An icon for the printer will appear in the Printers and Faxes window. You are now ready to print to your GCC printer.

TRADEMARKS

GCC Technologies is a registered trademark of GCC Technologies Inc. GCC Printers, the GCC Printers logo and Elite are trademarks of GCC Technologies, Inc. Microsoft is a registered trademark of Microsoft Corporation. Windows is a trademark of Microsoft Corporation. PostScript is a registered trademark of Adobe Systems Incorporated. Ethernet is a registered trademark of Xerox Corp.

© Copyright GCC Technologies Inc., 2001. All rights reserved.