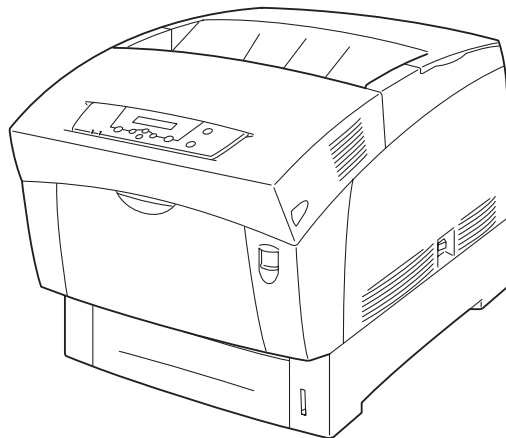


GCC Elite Color 16 Series Printer Software Installation Guide

Macintosh - OS X



Installing the Elite Color I6 Series with Mac OS X

Software Installation

You will need to set up your Macintosh computer to use the Elite Color I6 Series by installing the Elite Color I6 Series software for Macintosh. This software is on the Elite Color I6 Series CD-ROM. The CD-ROM includes customized PostScript Printer Description (PPD) files for the Elite Color I6 Series, ColorSync ICC profile and screen fonts for each of the resident PostScript printer fonts.

This document details installation instructions for installing software for Mac OS X.

Important: Read the release notes contained in the Read Me file before installing the printer software. This file includes important last-minute feature and compatibility information about the Elite Color I6 Series. This file is located on the Elite Color I6 Series CD-ROM.

Installing the GCC Printing Software and Fonts

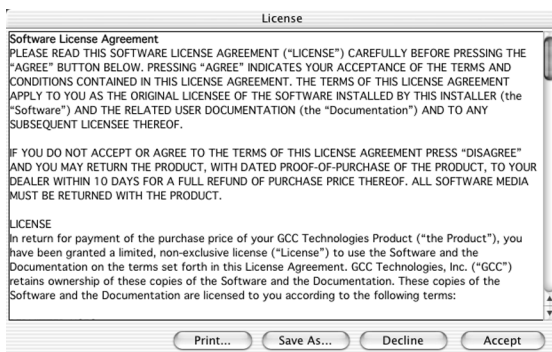
1. Insert the Elite Color 16 Series CD-ROM into the computer and double-click the CD icon to open the disk. Double-click the “Elite Color 16 Series Installer” icon within the disk window.

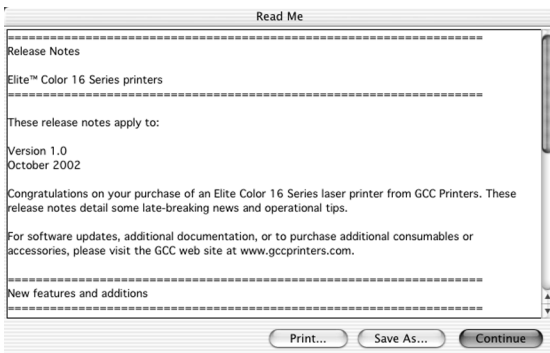
An OS X window may appear asking for an administrator password in order to install this software. Enter an admin user name and password to continue. Consult your OS X documentation for more information on access privileges.

2. An introduction screen marked “Macintosh Printer Installer” will appear. Click “Continue.”

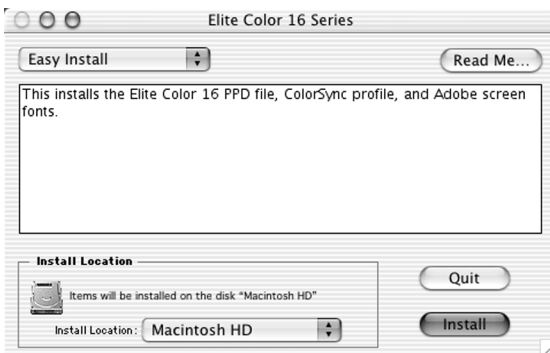


3. The software license agreement will appear. Read the agreement and click “Accept” to accept its terms.

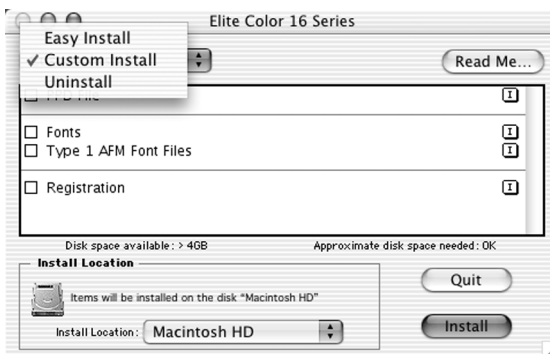




4. A window will open displaying the ReadMe file for the software. Read the information in this file and click “Continue” to proceed.



5. A window will appear listing the components that will be installed and asking for an Install Location. Choose the disk that you wish to install the software onto (the startup disk of the Mac in most cases) and click “Install.”

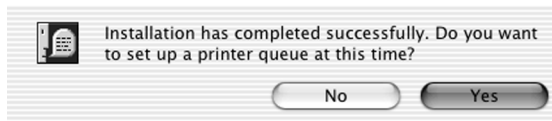


6. A Custom Install option is also available. If you only wish to install certain components of the printing software, click on the Easy Install popup menu and select Custom Install. Select the items you wish to install by clicking on the check boxes next to them, and click “Install.”

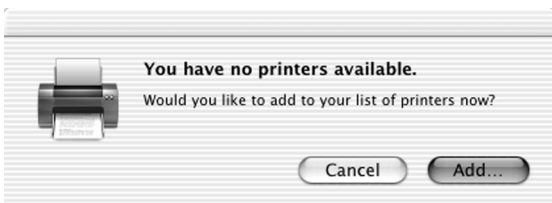
An Uninstall option is also accessible through this menu and can be used to remove the software as needed.



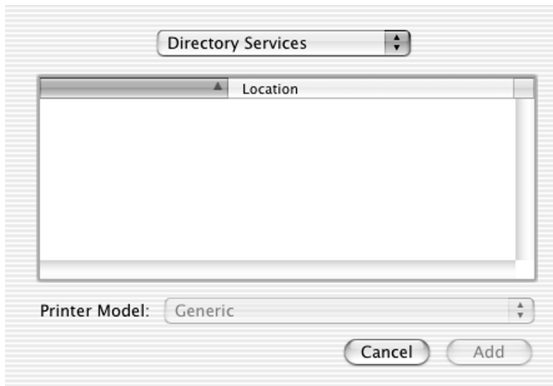
7. Installation of the files will begin. A status window will appear showing the progress of the installation.



8. When all files are installed, a dialog box will appear asking if you would like to set up a printer queue for the printer. Click "Yes."



9. If this is the first printer to be installed on the system, a dialog box will appear telling you that no printers are installed. Click "Add."

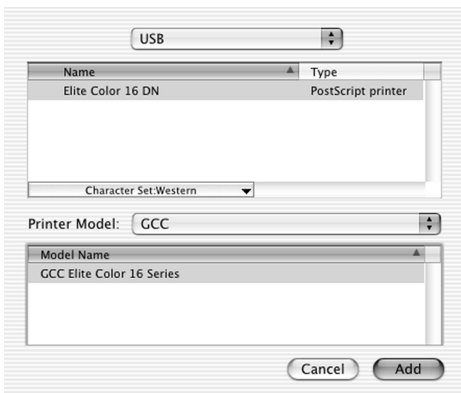


10. The Add Printer dialog will appear. Click on the “Directory Services” popup menu to see a list of connection options. Select the appropriate connection method for your printer (USB, IP or AppleTalk).

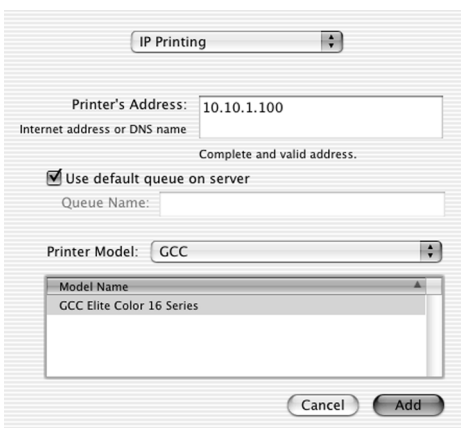
USB Connections: Proceed to Step 11a

IP Connections: Skip to Step 11b

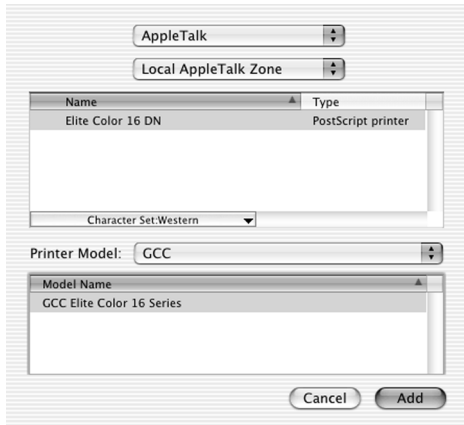
AppleTalk Connections: [Skip to Step 11c](#)



- 11a. If USB is selected, make sure the printer is plugged into the computer via USB and turned on. A list of available USB printers will appear. Click on the name of your printer. Select “GCC” from the Printer Model popup menu, then select your specific GCC printer model from the Model Name list. Click “Add.” [Proceed to Step 12.](#)

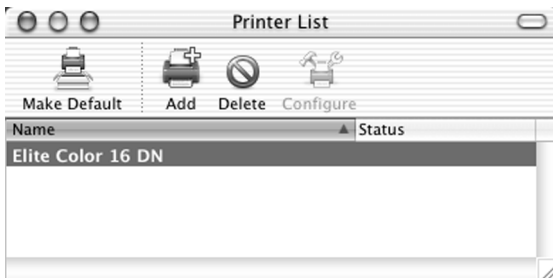


- 11b. If IP Printing is selected, make sure the printer is turned on, connected to the network and has been assigned an IP address. Consult the “Interface Menu” section on Page 7-11 of the Elite Color 16 Series User’s Guide for information on setting the printer’s IP address and other network settings. Fill in the IP address under the “Printer’s Address” field. Select “GCC” from the Printer Model popup menu, then select your specific GCC printer model from the Model Name list. Click “Add.” [Proceed to Step 12.](#)



- 11c. If AppleTalk is selected, make sure the printer is turned on and connected to the network. A list of available AppleTalk printers will appear. Click on the name of your printer from the list. Click “Add.”

Note: AppleTalk is disabled by default within OS X. Make sure that “Make AppleTalk Active” is selected in your Network Settings (under System Preferences) before attempting to access AppleTalk devices on the network.



12. Once the printer has been added, you will be returned to the Printer List window, where the printer will now appear as an option.

Highlight the printer name and click the “Configure” icon to configure printer options.

You are now ready to print to the Elite Color 16 printer.



13. When the installation is complete, a Product Registration screen will appear. You can choose to register the printer over the internet, which will access a registration form via your web browser. You can also choose to register the printer by mail, e-mail or fax. Select the registration method you prefer and follow the instructions on-screen for registering the printer.



14. When all files are installed, a dialog will appear informing you that installation was successful. Click "Quit" to exit the installer.

Note: Using the Classic Environment within OS X

The Elite Color 16 Software Installer will locate and automatically install the necessary software for your printer into the Classic (OS 9.x) environment within OS X. No additional software installation is necessary.

To set up your printer for use within Classic, you will need to create a Desktop Printer for the Elite Color 16 printer. Follow the steps in the Macintosh OS 9.x Installation Guide in order to set up a desktop printer icon for the printer in the Classic environment.

Note: Configuring Printer Options within older versions of OS X

OS X versions previous to OS X 10.2 (Jaguar) do not allow for or require manual configuration of printer options. When the printer is installed and selected in Print Center, the OS takes configuration information from the PPD file and polls the printer to determine which options are present. These options (such as additional trays, duplexing capabilities) will then automatically be available for selection within the Print dialog box.

TRADEMARKS

GCC Technologies is a registered trademark of GCC Technologies, Inc. GCC Printers, the GCC Printers logo and Elite are trademarks of GCC Technologies, Inc. Apple, AppleTalk, ColorSync, LaserWriter, Mac, Macintosh, and the Apple logo are registered trademarks of Apple Computer, Inc. PostScript is a registered trademark of Adobe Systems Incorporated. Ethernet is a registered trademark of Xerox Corp.

CREDITS

© Copyright GCC Technologies, Inc., 2003. All rights reserved.

Written by David Nicholson.

Edited by Lee Doron, Laurie Freitas, Brian Harriss, Wendi LeBlanc and Phil Parsons.

Guide printed in USA. Rev A